



Samuel Marchitto

SCENIC CARPENTER

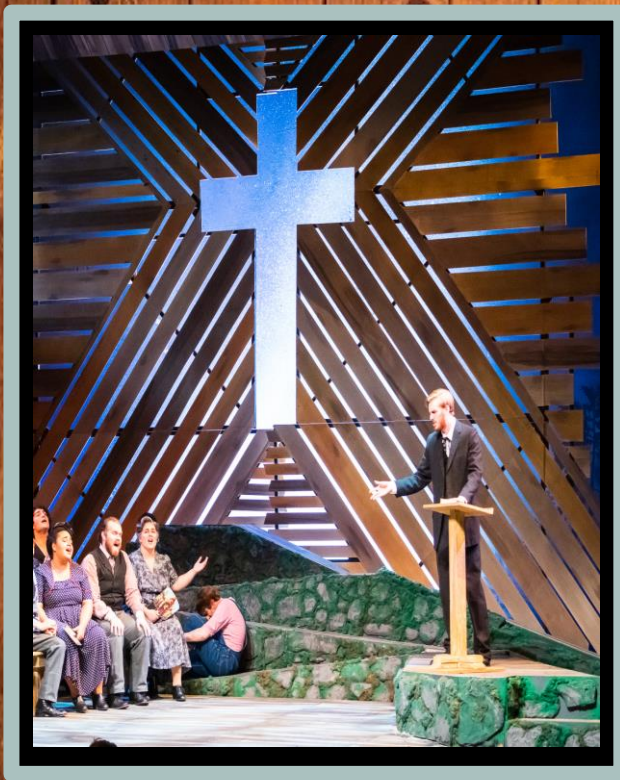


Contact Information

Phone: (239) 245-1956

Email: samuel.marchitto@gmail.com

Susannah



Romeo and Juliette



Newsies



Susannah

Brevard Music Center (2019)

Staff Carpenter

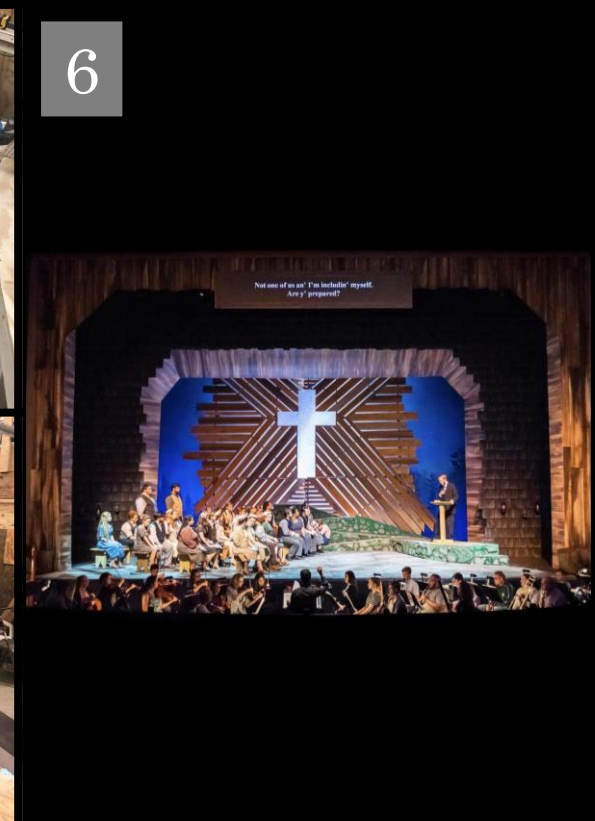
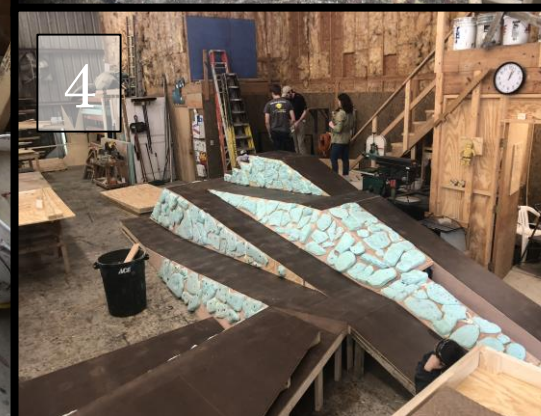
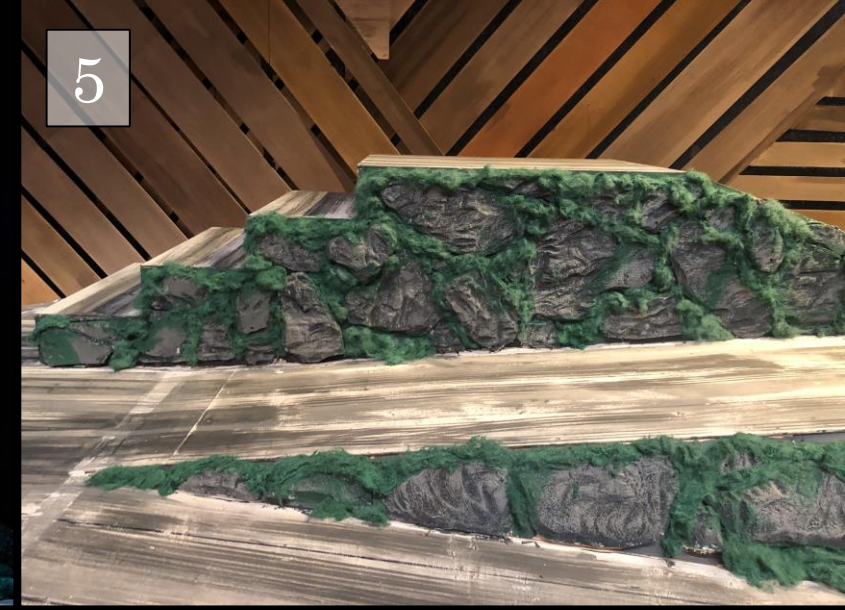


Susannah: Mountain Unit

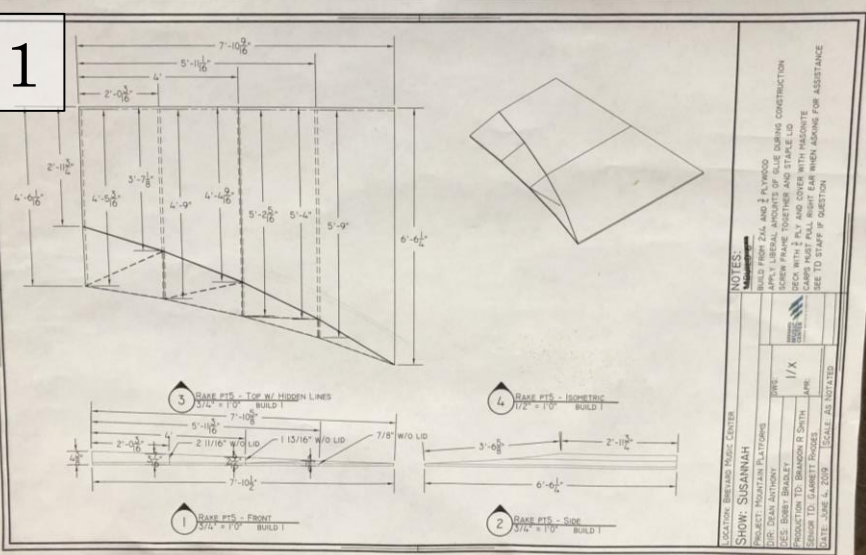
– I built the various ramps and platforms needed to form the large mountain. As we assembled the mountain, I installed cross bracing and added in 2x2 supports for the facing (picture 3). The facing we used was $\frac{1}{4}$ " luan and bendy board. In picture 2 on the left you can see part of the facing work. Due to the slope of the framing the use of bendy board was a necessity.

– Picture 4 shows the Masonite that was added to the ramps in order to make them smooth and easier to paint and detail. One issue we had was the slickness of the Masonite which we correct by adding sawdust to the paint mixture.

– Picture 5 is a close up on the foam carving and placement of moss I completed.



1



2



Susannah: Raked stage

- In pictures 2 and 3 you can see one section of the rake which tapered off to another piece referred to as the “wizard hat” ([Click picture 4 to see more rake pictures](#))
- This was probably the most difficult task I was given at Brevard. Although the plans were given to me it was still a trial and error process. I constructed this off-site, so I was not able to look at it in the space, so I had to make sure I left a little extra of the Masonite on the section that came in contact with the ground. Another challenge I had was the addition of the Masonite on the $\frac{3}{4}$ ” ply facing. Due to the angle it had to be trimmed and then sanded down to create a seamless transition. I completed the task by using an oscillating tool which allowed for a cleaner cut and the ability for me to go at my own pace.
- The rake was constructed out of $\frac{3}{4}$ ” ply for the frame and facing and 2 x 4 for the toggle supports.

3



4

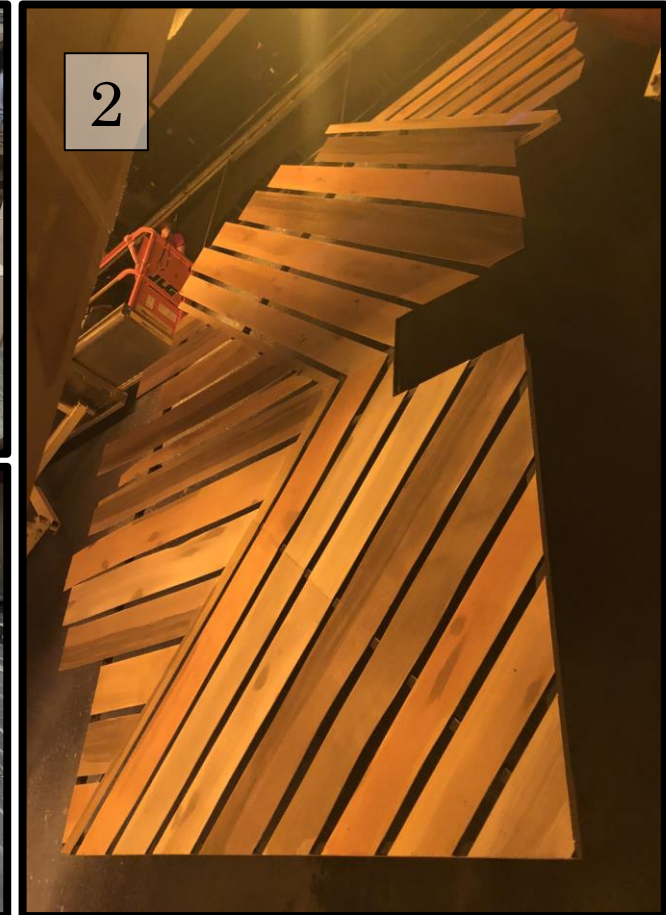


Susannah: Cross

- The cross for Susannah was a truly aweing piece in all aspects. It had to be durable but also very light since there were three sections for each side of the wall which was then put on a dead hung track. The cross stays off stage for a majority of the show with just a slight glance of the outer pieces till we hit the climax of the opera and then we see the walls slide in creating this beautiful showcase behind the mountain.

CARLISLE FLOYD'S
SUSANNAH

JANIEC OPERA COMPANY | BREVARD MUSIC CENTER



Romeo and Juliette

Brevard Music Center (2019)

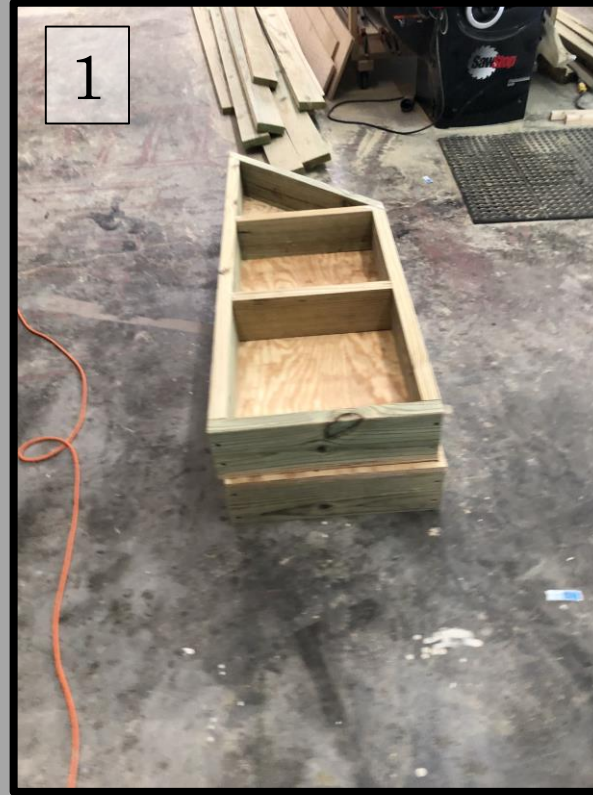
Staff Carpenter



Romeo and Juliette: Platforming

– The set for Romeo and Juliette was a two-story courtyard balcony with three towers that used hydraulic casters. Which moved and carried actors to different locations on the stage.

– I was in charge of constructing the lower level (pictures 2,3, and 4) and the second level (picture 1). Due to the nature of the space being very busy the platforming had to be taken apart and moved several times throughout the process. So perfection was a required when we were constructing.



Romeo and Juliette: Wall Construction

- I built a lot of the walls on the set those being the stud walls on the lower level (pictures 1, 2, 5, and 6) and the flats on the second story (picture 3 and 4). The only difficulty we had with the walls was the size of them since they are constructed off-site and the size of them was much bigger than our transportation. The second story walls were put in place and then the shutters and doors (seen in picture 4) were installed.



1



2



3



Romeo and Juliette: Specialty Projects

- Picture 1: Depicted are four out of the six doors which were constructed out of 1x3 frames and then luan strips were sandwiched together by another frame. The windows which are further back were constructed the same way.
- Picture 2: Above all the top floor doors and windows are pediments. I was in charge of taking three differently sized stencils and then cutting out model pieces to replicate each sized pediment multiple time.
- Picture 3: Within the show there are three towers which used hydraulic casters to raise the entire tower up, so that it was able to glide across the stage. In this build I helped with the framing and facing and facilitated with the hydraulic casters.

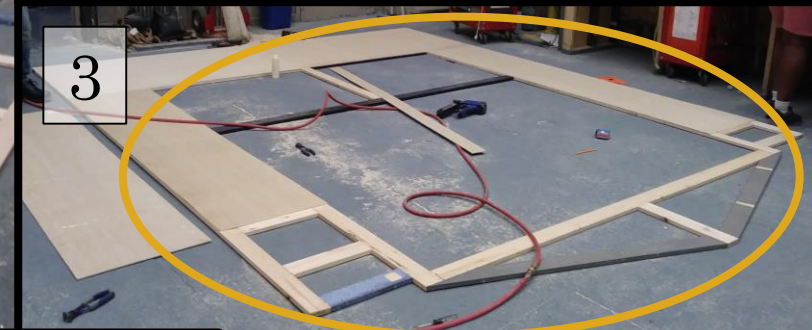
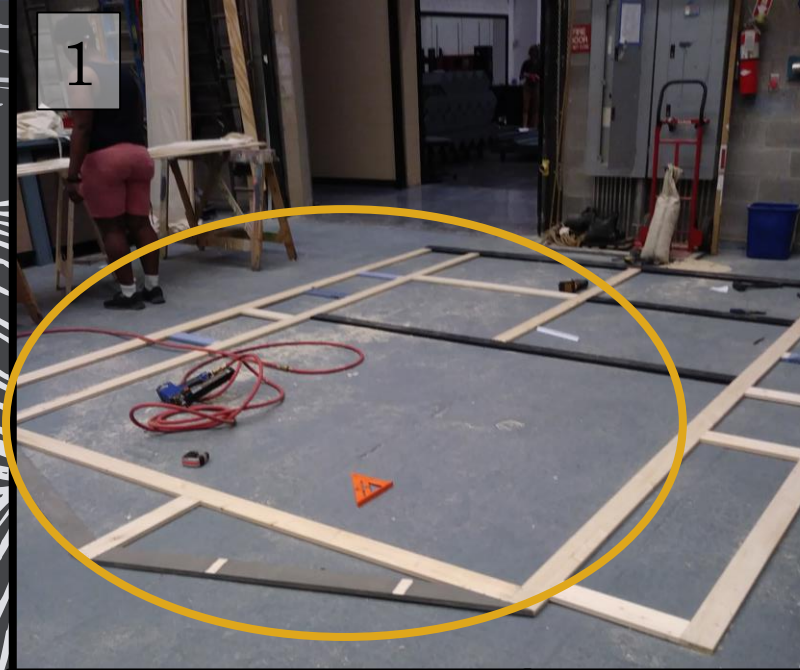
Newsies

Shenandoah Summer Music Theatre(2018)
General Technician



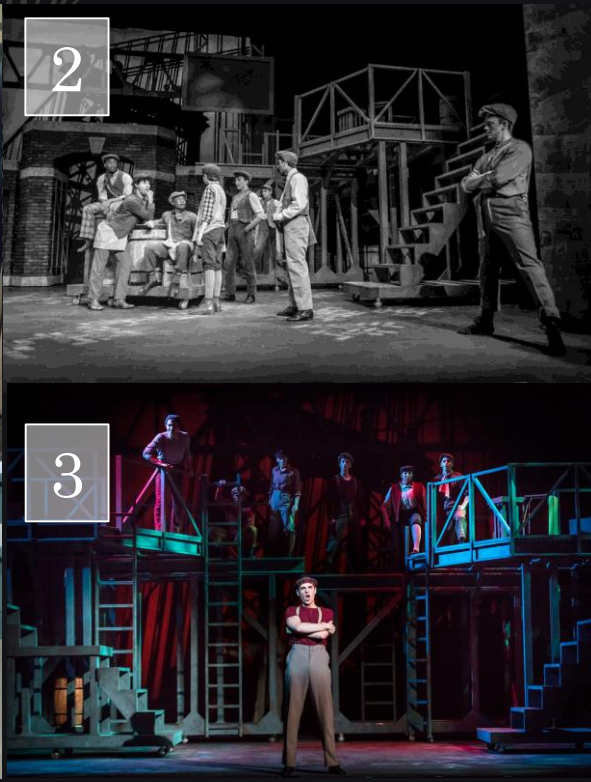
Newsies: Wall Construction

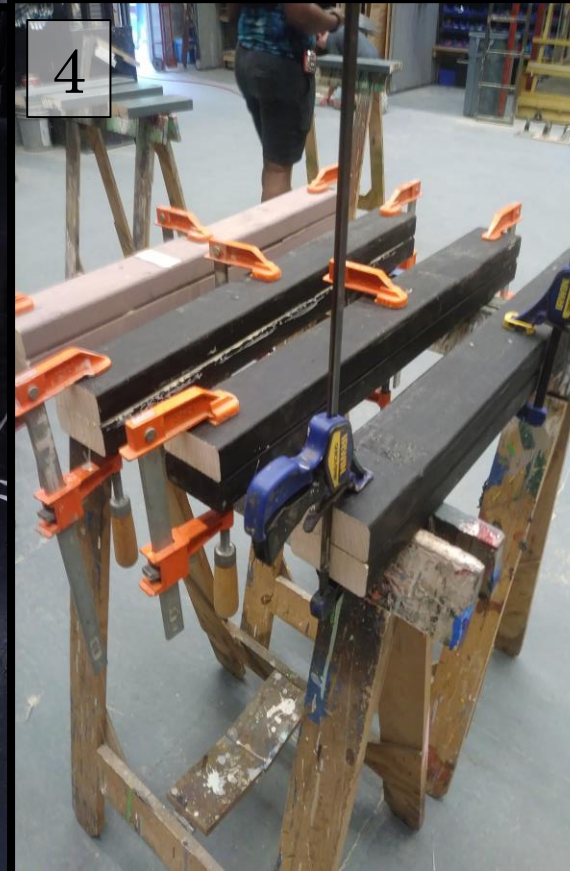
- In this construction process I was able to get a lot of carpentry opportunities as well as scenic painting (seen in picture 7 and 8)
- Due to the show being such a large multi scene production we made a lot of the walls be able to fly in and out. (seen in pictures 1, 2, and 3) This walls specifically was built out of 1x3 then faced with $\frac{1}{4}$ " luan and on the backside we took a scrim and cut it and stapled it to the frame. (circled)
- I was also given the opportunity to build two arched wall sets (seen in pictures 4, 5, 6, 7, and 8) These walls were constructed out of 1x3, luan facing and $\frac{3}{4}$ " supports. All of which was then covered by plastic shaped and painted to look like bricks.



Newsies: The main Units

- The main units (pictures 1, 2, and 3) were constructed to look like metal truss of an unfinished building. The two units would be pushed on and off stage in order to create different locations throughout the story. They were mainly constructed of 2x6 for the truss creations, 2x4 for some of the supports, 4x4 for support, and various metal for the flooring of the units and the ladders. The major issue we had with the units was that they were not on tracks, so it was difficult to keep them on track the whole show. We fixed this issue with better markings and communication.





Newsies: Specialty Projects

- In the production of newsies there is a very large tap number at the local pub and the cast dance on tables. The only issue we had was that we needed four tables and we only had three. So I replicated one out of 2x4 which was glued together then sanded (picture 1 and 3), two sheets $\frac{3}{4}$ " ply were used for the tabletop (pictures 1 and 2) , and then 1x3 supports were added to the legs. (pictures 4 and 3)
- In pictures 5, 6, and 7 you can see the process shots of door handles I made for a piece of scenery that flew in. It was constructed out of 1x3.

Professional Experience:

Entertainment Tech III	<i>Howl-O-Scream</i>	Busch Gardens: Tampa FL	2019
	<i>Christmas Town</i>	Busch Gardens: Tampa FL	2019
Staff Carpenter	<i>Susannah</i>	Brevard Music Center	2019
	<i>Romeo and Juliette</i>	Brevard Music Center	2019
	<i>Die Fledermaus</i>	Brevard Music Center	2019
General Technician	<i>Newsies</i>	Shenandoah Summer Music Theatre	2018
	<i>Mamma Mia</i>	Shenandoah Summer Music Theatre	2018
Assistant Stage Manager	<i>West Side Story</i>	Shenandoah Summer Music Theatre	2018
Technical Assistant	<i>Trumpet in the Land</i>	Trumpet in the Land	2017
	<i>All Shook Up</i>	Trumpet in the Land	2017
	<i>Odd Couple</i>	Trumpet in the Land	2017
	<i>Rat Pack</i>	Trumpet in the Land	2017

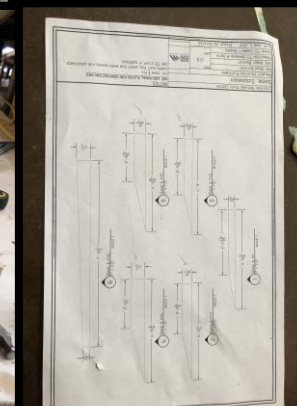
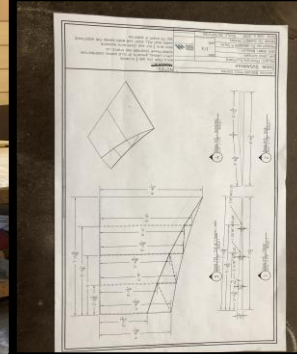
Related Experience

Master Carpenter	The Sound of Music	Florida Southern College	2019
Set Designer/Master Carpenter	Biloxi Blues	Florida Southern College	2019
Set Designer/Master Carpenter	See How They Run	Florida Southern College	2019
Carpenter	Jesus Christ Superstar	Florida Southern College	2019
Carpenter	Kiss Me, Kate	Florida Southern College	2018
Carpenter	Cat on a Hot Tin Roof	Florida Southern College	2018
Carpenter	Julius Caesar	Florida Southern College	2018
Carpenter	South Pacific	Florida Southern College	2018
Carpenter	A Funny Thing ...Forum	Florida Southern College	2017
Carpenter/Food Props Master	Dividing the Estate	Florida Southern College	2017
Carpenter/Asst. Master Electrician	The Rimers of Eldritch	Florida Southern College	2017
Carpenter/Asst. Master Electrician	I Love You... Change	Florida Southern College	2017
Carpenter	Musical Comedy...1940' s	Florida Southern College	2016

James Beck,
Chair, Department of Theatre Arts,
Florida Southern College
jbeck@flsouthern.edu
(863) 680-4226

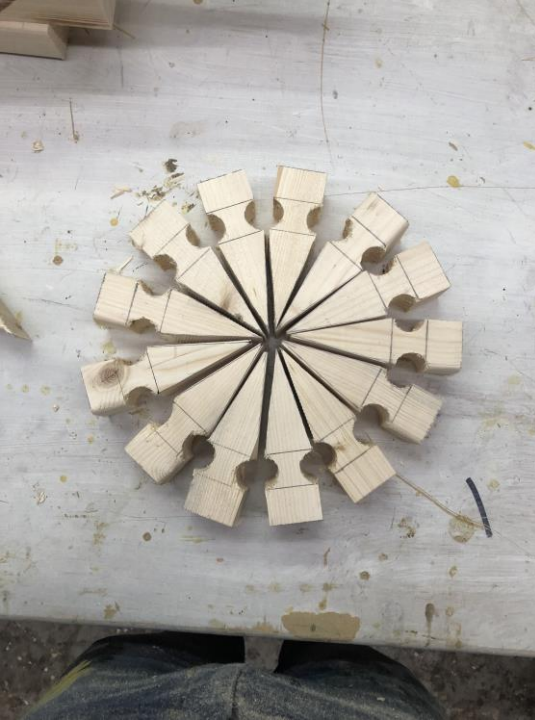
Garrett Rhodes,
Brevard Music Center
Technical Director (2019)
grhodes@brevardmusic.org
(828)577-5023

William Ingham,
Shenandoah Summer Music
Center Technical Director (2018)
wingham@su.edu
(540)545-7233



Related Experience





Related Experience Continued

